



KLC 'Ohana News

To Share the love and word of God through worship and service to others.



NOVEMBER 2024

KIHEI LUTHERAN CHURCH

Interim Pastor Ron Rucker

Stewardship

Trust God! For I know the plans I have for you... They are plans for good and not for disaster to give you a future and a hope." (Jeremiah 29:11)



The stewardship campaign has begun and continues through November 10th. All of us in the KLC 'ohana are considering our part in the maintenance of the church, community assistance, programs, staff, building, and all that makes this congregation so good. Kihei Lutheran is entering a time of changes. Some we know. Some are yet to be considered. That's why we look to our theme scripture and Trust God. We will never face any future challenges alone. God has a plan for KLC. We will look to God as we choose a pastor to lead us into the future. We will look to God as we entertain new or different ways to connect with our 'ohana within the sanctuary and online. We will look to God as we consider ways to reach out to the community and beyond. We will look to God as we consider the budget for our church home with the costs it takes to keep our home running both now and into the future.

Since the wildfires in August 2023, we have been able to partner with other organizations to give thousands of dollars and tons of supplies for local needs. We have been the conduit of God's love in many different ways to assist those who are suffering still. And still the needs and the work continue.

Last year, we entered our stewardship campaign with a big unknown because we knew there were fewer families involved with KLC. You all rose to the challenges ahead with record giving. Knowing stewardship is more than pledges to the budget, but a relationship with the church and our own personal relationship with God, we were blessed with a record number of people volunteering their time to help with church and community projects, truly doing God's work. Let's do this all again. Trust God with your finances. Trust God with your time. Ask God where you can best be involved. And give from your heart.

As Pastor Ron said in his stewardship letter, we also need to address the outstanding mortgage that takes a large chunk of the budget. This is money we would much rather use elsewhere. There will be an article in the next eblast about this. For now, we ask you to look at the pledge card you received in the mail and consider including an amount on the mortgage line as well as your annual pledge. Any amount helps. Also as mentioned in Pastor Ron's letter, legacy giving will be discussed in a future eblast.

Please be part of KCL stewardship with your pledge of time and finances. This is not an obligation, but a privilege to support your church 'ohana and give back to God a portion of all that God provides for you each and every moment.

We thank you for being part of Kihei Lutheran Church and look forward to many opportunities to be together and share God's love.



Ron R
Rucker



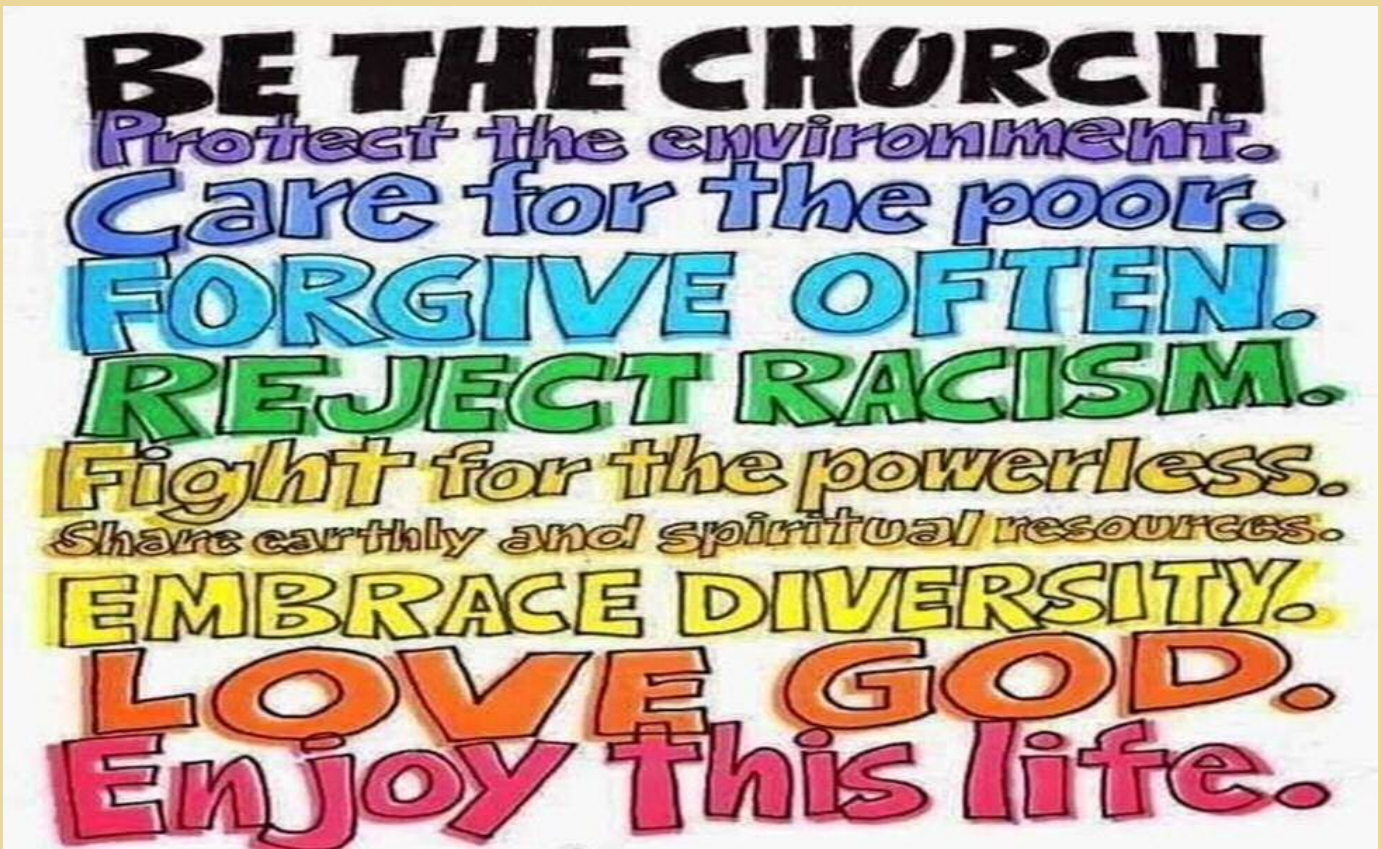
ALOHA FROM PASTOR RON RUCKER

Aloha from Pastor Ron,

Last Sunday, October 27th, was Reformation Sunday and the first Sunday in the three Sundays of our annual stewardship emphasis. The Reformation was about people who believed the church needed to change so they protested the things they thought the church was doing wrongly. Out of their protests came a whole new set of churches called protestants. Did you know church history shows the church makes major changes roughly every 500 years and we are at one of those 500 year change points? I saw after the service on October 27th a meme that said, **“The church must always be reformed.”** Why is that?

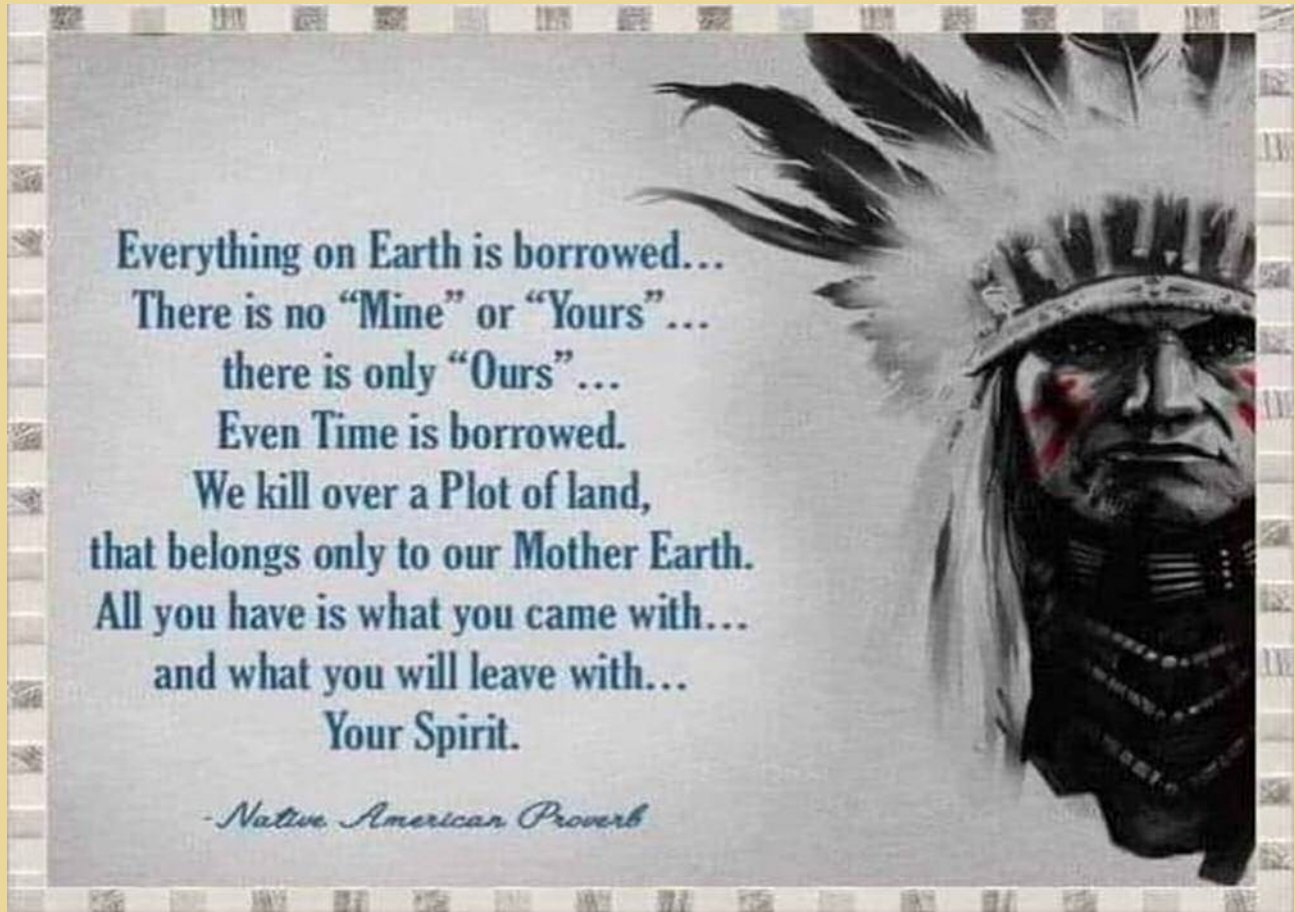
Well, our stewardship theme is about change. Change is inevitable. Our world is changing in so many ways, so fast that it is hard for us to keep up with it? Now, I know there are biblical passages that say God does not change, yet I also know there are biblical passages recounting how God changes. So, you might ask, which is it? Your particular answer depends on your perspective, but for me, the answer is that God’s love and mercy never change. But with God, everything else is subject to change. Change is happening in our climate. Change is happening in our world. Change is happening in our churches. And finally, change is happening at KLC. We need to be prepared for change and to “roll with the flow”, so to speak by being both prepared for change and by trusting that God is in control. The strength of our relationship with God and with each other determines how we will navigate the change around us.

I want to end this article by sharing two memes with you. The first is about being relational with all that is around us.



Continued on the Next Page...

The second is an indigenous perspective on what it means to be in relationship with **all** that is around us.



To be relational or in relationship means to put aside possessiveness and the desire for control and power. In the words of Jesus that means serving, being a servant to others and to all of our world.

If you need my assistance or just want to chat, feel free to call Cate in the church office or to call or text my cell phone, 907-841-6992.



Property Cleanup

We are planning a before Holiday Property Cleanup Day on Saturday, November 9th, starting at 7 am. Let's get things spruced up for the Holidays. This will be the last cleanup day for the year. Please feel free to contact Sue M. for any questions.

Flower Chart Available for 2025

The 2025 flower Calendar is here! Signups for the new year can begin in October. Thanks to the many members who provided flowers to add beauty to our services in 2024.



Thanksgiving Service and Meal

We will host a Thanksgiving service and meal on Thanksgiving Day, November 28th. The service will begin at 10:00 am with the meal beginning at 11:30. There is no need to bring anything since the food will be provided. Everyone is welcome to join with us. So, bring a friend or anyone you know who is struggling during this time and just may need a little pick-me-up.

Presidents Message

PRESIDENT'S
REPORT

This past month has been an exciting month for Kihei Lutheran. First, we completed the Ministry Site Profile and submitted it to the Pacifica Synod where it was approved! Second, the Church Council selected a Call Committee to begin the call process! Third, we began the Stewardship campaign for the 2025 church year!

The Call Committee members are Marty Atrops, Andrea Harris, Laura McClellan, Sue Moorcroft, Phil Proctor and Margie Terluin. The committee selected Phil Proctor as the committee chair. The Call Committee must keep everything they discuss and do confidential. So, please do not approach them to ask details about what they are doing or ask about applicants. Phil will give the congregation updates and reports when it is appropriate. Please keep all the members of the Call Committee in your prayers as they begin the task of finding the future pastor for Kihei Lutheran Church.

We know God has plans for KLC and that HE has a pastor to lead our congregation. What we don't know is when HE will send that person to us. It could be in the near future, or it could take a year or more. What we can do is continue our vibrant ministry at KLC and prepare for the arrival of our future pastor.

The Stewardship campaign began on Sunday, October 27. God provides everything we have, and we are fortunate to be able to give back and share in the gifts he has given to us. Spiritually speaking, your pledge is your response to God's abundance in our lives. It is both a statement of thanksgiving and an outward and visible sign of our commitment to follow in the way of Jesus, by giving as God gives to us.

I ask you to prayerfully consider how you can support our congregation with your time, talents, and finances in the coming year. If everyone could increase their pledge amount, no matter how small, when pooled together, it would make a substantial difference to the ministry at KLC.

Every month one of our largest expenses is our mortgage payment of \$2,537, which is paid with the general offerings. Imagine what a difference it would make if we could pay down the principle and work together towards paying off the mortgage. On your pledge card there is a place where you can also give directly to the mortgage.

We know you work hard, and that finances can change during the year. Your pledge card is an indication of your intention towards giving. It is an estimate of your giving for the coming year, which in turn, funds everything we do as a faith community – from paying the salaries of our pastor and staff, to supporting our outreach ministries, our pastoral care, our worship, our education programs, fellowship, our music programs and our facilities. It provides the finance committee essential information to help with budgeting for the upcoming year.

We are continuously thankful for the time, talents, and finances that you all share so generously with the congregation. I am so blessed to be a part of the KLC Ohana and am grateful to God for everything that HE has given to us.

Blessed by God,

Renee Romerdahl

CONGREGATIONAL

MEETING &
BUDGET VOTE



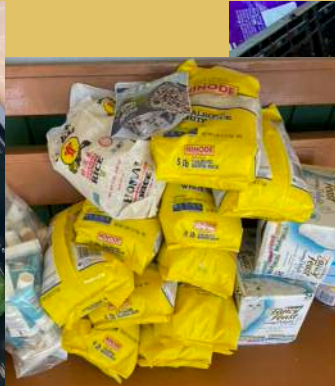
Sunday, December 11th right after service.

ATTENTION KLC MEMBERS! DECEMBER CONGREGATIONAL MEETING.

Our church Council has scheduled the December budget meeting for December 1st after service. The budget will be available starting on or slightly before November 17th. The packet will include the meeting agenda, the full budget, and a condensed version for you to look at before the meeting. The full budget has every line item in it and includes notes. The condensed version is just the bottom line for each budget section. It will be in paper form as well as available digitally. If you have any questions, please contact the office.

Keolahou Food Pantry

On the last delivery to the Food Pantry on Thursday, Oct 17th, Margie had the opportunity to take some pictures as the team of volunteers were preparing for their weekly Friday Food Pickup. Aloha was sorting through the fresh fruit and vegetables they received from donors such as Whole Foods. Not only do the recipients receive canned or boxed food items such as we provide but some folks can also get some produce. There were also some loaves of bread available. The pantry tries weekly to incorporate as many fresh items as available. Since Covid, they have decided to continue making prepacked food bags, but also give people the opportunity to pick up some fresh items. They serve 75-85 families weekly. A family can be anywhere from 1 to 10 people per household. They were very happy to receive our "load" and had to set up extra tables to fit our almost 1300 individual items. Mahalo to everyone who continues to donate monthly, and those who participated in the 50th ELCA World Hunger Collection by bringing canned food weekly. We received 52 extra items. We also had 3 generous donors this past month who brought cases of cereal, peanut butter, spaghetti and sauce, and monetary donations. Vicki, Jessi and Margie were able to shop at Walmart and filled 2 carts totaling over \$200.00. We are blessed here at KLC, and what we do is needed so very much and appreciated by Keolahou Food Pantry.



Community Outreach Bake Sale

Community Outreach is having a bake sale on Sunday Nov 17th. You are invited to bake OR buy goodies to help with this ministry fundraiser. All items received will be set up on special tables, and the purchaser will decide what price they would like to donate. Contact Margie (808-874-5049) or Hilary (808-359-7713) to let them know you are willing to bake or buy. All monies collected will be used for future Community Outreach projects

Peanut Butter Ministry

Another month to make PB&J sandwiches has come and gone. A big mahalo to our dedicated volunteers, and to our new volunteers. Sue and Tori came to help out, as well as Marlene Hutchinson and Linda Scott from Mission Lutheran in Laguna Nigel, California. The Californian's took some time on their last day of vacation to join the group in the sandwich making activity. How gracious it was of them to join us in this important ongoing ministry. The next PB&J sandwich day is scheduled for Friday Nov 8th. If you would like to help, contact Hilary and she will place your name on our 10-person roster.

Also, Nanette and Pastor Ron had visitors from Alaska. Nina, (Grandmother), Grace (Mother) and Arietta and Cadence, daughter of Grace, spent an afternoon with Nanette assembling hundreds of first aid baggies that are used in the hygiene bags. How wonderful it was to have the girls involved with learning to help others in need by participating in the project. Thanks to Nanette for asking how they could help during their stay on Maui. Mahalo nui loa to everyone who have embraced our servitude ministries.



Council Secretary's Report from the October 2024 Council Meeting



A regular meeting of the KLC church council was held via Zoom with a quorum present. The meeting was opened with a devotion and prayer by Zel Terluin.

Pastor reported the info on Pastor Jeff's Memorial Service. The Ohana Strong bus may be arriving at the church soon. Pastor asked for some vacation time December 4-15. He realizes this is during Advent, but he has Pastor Chris already set up to fill in on the 8th and 15th.

Renee reported that Phil Proctor will be chair of the call committee, and the MSP has been submitted.

Treasurer Margie Terluin reported that the giving for the week of October 15th was \$11,021. Year-to-date income is \$222,140.40 and year-to-date expenses are \$228,701.89.

Solar panels need to be cleaned at the church and the parsonage. We are working on getting quotes. One toilet in the church is still running. Keli will come to look at it to see what may need to be fixed.

The stewardship drive is October 27-November 10.

The 2025 budget was looked over and approved. The congregational meeting has been set for December 1st. There will also be a staff appreciation brunch after the meeting that day.

Next regular meeting will be November 19, 2024, at 7:00 pm, to be held virtually.

Respectfully submitted,

Rhonda M. Bode Stoltzfus

To see a copy of the approved September Council Minutes please [Click Here](#).

Lutheran Disaster Relief Grant

Pastor Ron visited the Feed My sheep distribution site in Happy Valley and presented Scott Hopkins, Executive Director, with the Lutheran Disaster Relief grant check for \$98,000. This will be used to provide meat to about 400 families for one year.



Important Statistics

September	2023	2024
Average Sunday Worship Attendance	55—In Person 432—Streaming Reach	51—In Person 123—Streaming Views
Total Attendance In Person and Streaming Reach	218—In Person 1726—Streaming	253—In Person 617—Streaming
Offerings For The Month (members & visitors)	\$14,262.02	\$18,266
Offerings – Year to Date (members & visitors)	\$174,490.39	\$170,169.40

KLC is a qualified section 501(c)(3) organization. All offerings or donations are tax deductible under section 170 (c)(2) of the IRS regulations. Making an offering/donation constitutes your agreement to relinquish control in accordance with those regulations and KLC policies.



Scan this QR Code to get to our Givelify page.



Prayer Shawl Ministry

Prayer Shawl

The Prayer Shawl Hui meets on Thursday mornings at 9 am. If you need a prayer shawl or have any questions please contact the office and Cate will be able to assist you. If this is a ministry you care about, please consider a donation. We rely on donations to purchase more yarn and are in need of some more fund. Mahalo for your help.

The Prayer Shawl Ladies



Church Council

Next Meeting will be:
November 19, at 7:00
PM Via Zoom



Men's Hui

Next Meeting:
When Scheduled

All are Welcome

Administrative Office Hours:

Monday thru Thursday:
9:00 AM—5:00 PM
Friday:
9:00 AM—4:00 PM



LIKE" US ON FACEBOOK

If you haven't already "liked" our page: www.facebook.com/KiheiLutheran go ahead and do so to be the most up-to-date on upcoming church events. A link is already on the church website!

HAU'OLI LA HANAU! (Happy Birthday!)



Tony Wakefield	11/1
Natalie Proctor	11/2
Joy Steben	11/3
Shawna Handley-Stiller	11/7
Darrell Pierson	11/7
Elvin Kamoku	11/8
Joel Rudow	11/9
Kamaehu Spencer	11/9
Michelle Beyersdorf	11/10
Peggy Crossen	11/10
Raymond Steben	11/11

Evelyn Kaya	11/13
Patricia Duckworth	11/14
Quinn Hottendorf	11/17
Andrew Lawson	11/17
Gail Holt	11/19
Ed Shafer	11/19
Peggy Alexander	11/20
Linda Hangartner	11/21
Johnny Romerdahl	11/22
Margaret Luteijn	11/24
Morgan Stoltzfus	11/28

HAU'OLI LA HO'OMANA'O! (Happy Anniversary!)



John & Dori Thorngren	November 2, 1991
Dave & Heather Ballaine	November 26, 1993



Kihei Lutheran Church November 2024



SUNDAY	MONDAY	TUESDAY	WEDNESDAY	THURSDAY	FRIDAY	SATURDAY
27 9am Worship 3pm Tongan Church	28 10am Faith Journey— Zoom	29 8am Insurance Seminar 12pm AI-Anon	30	31 9am Prayer Shawl 5pm Trunk or Treat	1 12pm AI-Anon 3pm Pre-Set for OKE	2 9am Chana & Keiki Exchange
3—Keolahou Food Pantry 9am Worship 3pm Tongan Church	4 10am Faith Journey— Zoom Don't Forget	5 8am Insurance Seminar 12pm AI-Anon to call	6 11:30am Rotary People to	7 9am Prayer Shawl 5pm Choir 6pm Chimes check in	8 12pm AI-Anon 1:15pm PB & J Making on them	9
10 9am Worship 3pm Tongan Church	11 10am Faith Journey— Zoom 7pm Worship Committee	12 8am Insurance Seminar 12pm AI-Anon 5pm Finance Committee	13 11:30am Rotary	14 9am Prayer Shawl 5pm Choir 6pm Chimes	15 12pm AI-Anon	16
17 9am Worship 3pm Tongan Church	18 10am Faith Journey Don't Forget	19 12pm AI-Anon 7pm Church Council to call	20 11:30am Rotary People to	21 9am Prayer Shawl 1pm Hygiene Bag Making 5pm Choir 6pm Chimes check in	22 12pm AI-Anon on them	23
24 9am Worship 3pm Tongan Church	25—Newsletter Deadline 10am Faith Journey— Zoom	26 12pm AI-Anon	27	28—Thanksgiving Day Office Closed 10am Thanksgiving Service 11:30 am Thanksgiving Meal	29—Office Closed 12pm AI-Anon	30 Tongan Use of Church

Staff

Pastor Interim Pastor Ron Rucker
 Music Coordinator Beth Fobbe-Wills
 Church Administrative Asst. Cate Evert
 Bookkeeper Sue Whitney

Worship Area Coordinators

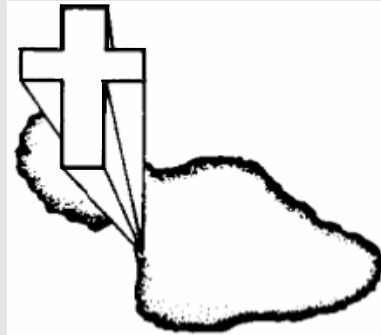
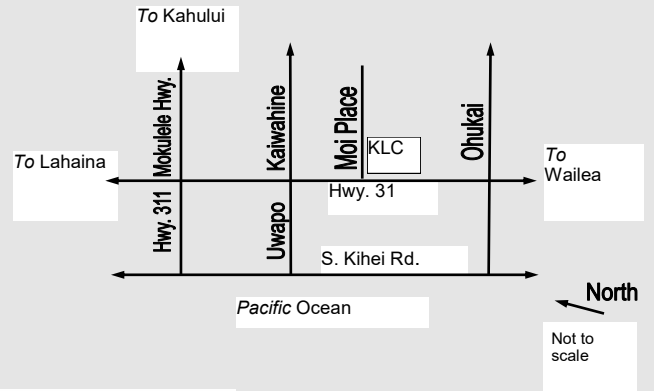
Chimes & Choir Director Beth Fobbe-Wills
 Flowers Andrea Harris
 Hosts Coordinator Marilyn Hopkins
 Worship Assistants/Readers Zel Terluin

Other Contacts

Treasurer Margie Terluin
 Financial Secretary Marilyn Hopkins
 Hula Group Sally Handley
 E-mail Prayer Chain Cate Evert

SUNDAY WORSHIP

9:00 AM



Kihei Lutheran Church
 220 Moi Place, Kihei, HI 96753
 Phone: 808/879-7979
E-mail Address:
klc@kiheilutheran.org
Website Address:
www.kiheilutheran.org
Parsonage:
 2218 Auina Place, Kihei, HI 96753

“Where all know they are beloved children of God”

Address Correction Requested

Non-Profit Org.
 U. S. Postage
 Paid
 Permit 47
 Kihei, HI

Kihei Lutheran Church
 220 Moi Place
 Kihei, Maui, Hawaii 96753
 (808) 879-7979