



# KLC Ohana News



DECEMBER 2016

KIHEI LUTHERAN CHURCH INTERIM PASTOR DAVID BARBER

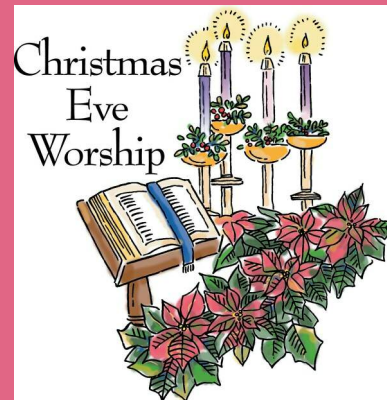
## CHRISTMAS CANTATA

On Sunday, December 11, 2016, we will be offering our cantata, "Is There Room In Your Heart For A King?" The KLC Adult Choir will be part of this liturgy. Please come and join us as we hear Christ's story through word and song. Let us Joyfully anticipate the birth of our Savior.



## CHRISTMAS EVE WORSHIP

On Saturday, December 24<sup>th</sup>, KLC will hold two Christmas Eve services, beginning at 5:00 & 7:30 p.m. The 5:00 p.m. service will be geared toward families with children, All services will include the singing of Christmas carols and Holy Communion, along with a variety of special music at each service. Each celebration will conclude with the lighting of candles and the singing of 'Silent Night' as our hula group dances the traditional Filipino 'Pandango sa Ilaw' ('Dance of Light'). Please accept our invitation to join us during this most holy time to worship Christ Jesus as we remember and celebrate his birthday through these worship opportunities.



## KEIKI CHRISTMAS GIFTS

This year we will be collecting unwrapped gifts for over 100 keiki that are served at the Keolahou Food Pantry. If you would like to help with this project please sign up for a child, or you prefer you may give a monetary donation and an we will shop for you. Gifts should be within a \$10 limit, and are not to be wrapped. It is best to avoid toys that require batteries. Parents will have the opportunity to personally select a gift for their child at the Keolahou Food Pantry and wrap it before taking it home. Donations of wrapping paper would also be appreciated. Sign up sheets will be available after church services. All gifts need to be purchased and returned to church by Sunday, December 10. Please see or contact Renee or Nels Romerdahl for donations, questions, or more information. (874-5695)



# ALOHA FROM PASTOR DAVID



David Barber

***Do not be afraid; for see – I am bringing you good news of great joy for all the people: to you is born this day in the city of David a Savior, who is the Messiah, the Lord. (Luke 2:10 – 11) And the Word became flesh and lived among us. (John 1:14)***



Recently, those in the KLC Movie Club attended and viewed the movie *Hacksaw Ridge*. It's the story of Desmond Doss who served as an Army Medic at the Battle of Okinawa during World War II. Desmond Doss was a Conscientious Objector who refused to carry a gun in battle because he believed it was wrong to kill anyone even in war. Although he initially suffered much abuse and persecution from fellow soldiers and even faced the possibility of a court martial, he eventually prevailed. Not only did he transform the attitudes and actions of his commanding officers and fellow soldiers, but his heroic bravery in the heat of battle empowered him to save many more lives than if he had carried a weapon.

Desmond Doss had the courage to live by his convictions even in the face of great resistance. In this Advent Season and in this present time in America, we are called upon to do the same. Although we admire him, very few of us will adopt the stance of Desmond Doss and become a conscientious objector. However, living by the vision and the good news of the Advent and Christmas Season may require just as much bravery and dedication at a time when hate and fear in our culture are very prevalent.

For instance, the magnificent and unbelievable vision captured in the Advent readings from the Book of Isaiah requires tremendous conviction on our part. Isaiah imagines a time when swords will be beaten into plowshares and spears into pruning hooks; he dreams of a time when the lion will lie down with the lamb and the leopard will lie down with the kid; and he visualizes a time when the eyes of the blind shall be opened, waters will break forth in the wilderness, and streams in the desert. Do we have the audacity to put our life on the line for this vision, and live and act if this were so? Do we have the mettle to be a partner with God and live into this promise even when confronted with another reality day-after-day?

With the birth of Jesus and the Word made flesh, a new reality and a new creation is breaking into our world and into our lives. Therefore, we are commissioned and empowered to live boldly and confidently in light of this reality: to beat weapons into plowshares; to care for the refugee and the illegal alien; to be advocates for those who are poor and hungry; to stamp out the scourge of racial injustice and all the ways we demean others who are not like us; to be diligent in tending the earth and to be faithful stewards of all the gifts that we abundantly receive from God's creation each day.

In all that we do, in all that we say, we are emboldened to embody the message of Christmas. This is a message that demands the totality of our lives. This is a message that is for you and for me and for all of creation. It is a message that bears repeating again and again: "Unto you is born this day in the city of David a Savior, who is the Messiah, the Lord." This good news reminds us that we have only one Savior, Jesus Christ our Lord. He is the One who is our life, our hope, and our peace, and he is the One who has set us free to serve our neighbor.

May God give us the courage to live by the convictions of our faith and to animate the message of Advent and Christmas in every time and place.

Pastor David

*Be thankful in all circumstances, for this is God's will for you who belong to Christ Jesus. (1 Thessalonians 5:18)*

With the month of November comes the holiday of Thanksgiving, a reminder to us all to be thankful. We are thankful for a multitude of blessings; the special people in our lives, who we are and what we have, all blessings from God. He continues to bless all abundantly through our ohana, spiritual gifts and an environment that sustains us. This is the season that we express our gratitude for these tremendous blessings. I thank God for bringing each and every one of you to our congregation. I am grateful for all that He has given us, things that I notice everyday and things that are well beyond my comprehension.

For this newsletter article I want to share with you a few of the blessings that I have witnessed in our KLC Ohana this year. Our Council has been growing as a leadership group. Each member is being stretched a bit more this year, learning how to work with our Interim Pastor and at the same time diligently supporting our ongoing ministries. We have a call committee who is actively reviewing potential pastoral candidates; just completed a very successful "Oktoberfest" a new and regular outreach event. In addition, giving continued over the summer months to provide sufficient funds for perhaps the first time ever and our pledges have increased this year. The Committees have stepped up as well. Here are but a few examples:

Outreach is developing activities to be more intentional in recognizing new members, integrating them into the congregation and supporting current members with additional small group activities.

Our youth activities are undergoing change as the committee works to redevelop a member led youth program.

Finance has just completed a thorough review of our dedicated funds that will provide for more efficient and effective management of our funds.

The administrative team is hard at work developing job descriptions and policies and procedures to help our committees recruit new members and facilitate their work.

I think that perhaps Dave Ballaine may have summarized it best when he noted at our last Council meeting that he was delighted to see our congregation as strong as ever. A Mahalo nui loa to each and everyone of you for all that you do!

I wish you all a wonderful thanksgiving and leave you with this thought – we are in good hands, he will keep us. "And in this he showed me a little thing, the quantity of a hazel nut, lying in the palm of my hand, as it seemed... In this little thing I saw three properties. The first is that God made it. The second, that God loves it. And the third, that God keeps it." *Julian of Norwich*

With Warmest Aloha,

Mark Fornwall

## COUNCIL UPDATE

This month was very productive at our meeting and we'd like to share with you the things we discussed.



Pastor David and the Executive Committee has been working very hard to upgrade our membership list. This is done on a yearly basis as it is important to know who is active in the church. We will be sending out letters to some to find out if they have moved, gone to other churches and if they still want to be included in our directory. A new and active directory should be very helpful to our new pastor coming in.

Treasurers report shows that giving is down right now which is a concern.

Oktoberfest was a huge success and everyone seems to be ready to do it again next year.

We will no longer use the bulletin covered purchase on Sunday. Worship is looking at reducing our costs for bulletins. Cate will be trying a few formats and we hope that the congregation will inform us as the best format.

Outreach committee is going to work with 3 new groups to enhance fellowship. The adult groups are will include young 20- 40, Middle age 40 – 65, and seniors 65 and older, the ages are somewhat flexible - We trust you know what group you will be in.

Yours in christ,

Mark



## CALL COMMITTEE UPDATE

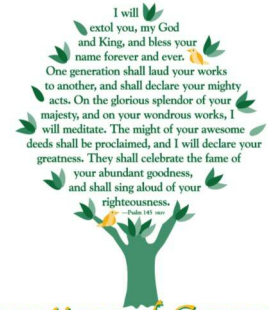
### CALL COMMITTEE UPDATE

We are finally on our way! After much preparation and prayer, we are finally receiving the names of potential candidates. The Call Committee will review the applications and interview those we feel might be good candidates. I am writing this in mid-November, so by the time you are reading this, we will hopefully have already started the interviews. We will keep you updated as we have more information. Please continue to pray for God to guide us to the perfect match. Mahalo!

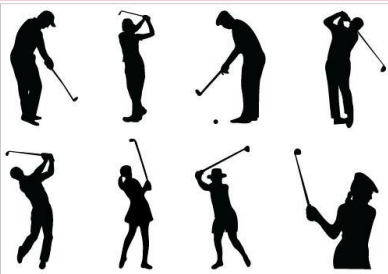
## GENERATIONS OF GENEROSITY

As of November 20, a total of \$246,901 has been pledged from 61 cards. It's not too late to turn in your pledges. The proposed budget is \$367,467, and this year's pledges are more important than ever. What has been pledged will be pivotal as the Call committee and congregation consider candidates to be our new minister. If you haven't pledged yet, please consider doing so! Drop it off in the office or offering plate.

Spiritual Gifts Committee



Generations of Generosity



## ATTENTION GOLF ENTHUSIASTS

The annual "Tournament of Champions" event at the Kapalua Resort is January 4 - 8, 2017. Hale Kau Kau, the program to feed the hungry in Kihei, is given tickets to sell for the event with 100% of the proceeds given back to Hale Kau Kau. One day tickets are \$30; full event tickets are \$70. See Dave Reader or call him for more information....874-1481.



Together with their families

Roxanna Nelson  
&  
Neil Nunan

invite you to join in the  
celebration of their Wedding  
at Kihei Lutheran Church  
December 30 at 5:00 pm



WULFPACK RSVP & info. at [www.neilandroxi.com](http://www.neilandroxi.com)



# ENDOWMENT COMMITTEE



Pictured (left to right) are: Amy Maeda, Program Administrator, Hale Kau Kau, Casandra Abdul, Executive Director, Na Hale O Maui, Mike Trotto, Board President Na Hale O Maui and Tom Rietz, Chair, Kihei Lutheran Church (KLC) Endowment programs on Committee.

The KLC Endowment Committee has notified two Maui nonprofit agencies that they are recipients of endowment grants given out this year. They are Hale Kau Kau and Na Hale O Maui. Hale Kau Kau will receive \$500 and Na Hale O Maui will receive \$1,500.

The KLC Endowment Fund was established in March 2011 when two individuals donated a total of \$35,000 to KLC. These donations were placed in the ELCA Trust Fund, as the Fund was deemed to have investment criteria in line with Lutheran principles regarding socially responsible funding. The Fund balance is currently over \$43,000 and has averaged over 6% per year since its inception. The initial and subsequent donations to the Fund are restricted to perpetuity and only the interest on the funds can be distributed as grants.

Hale Kau Kau relies on the Maui Food Bank and donations from the public to serve protein, fruits vegetables and rice to over 1285 people per week. These include 560 homebound elderly, 525 men, women and keikis at Hale Kau Kau and 200 veterans and community volunteers at the Puunene Armory. The grant from KLC Endowment Fund will go a long way in providing nourishment to the above mentioned groups who need food assistance. Their annual budget is over \$450,000.

Na Hale O Maui is the first Community Land Trust (CLT) in Hawaii, founded to develop and preserve affordable home ownership alternatives for people of low and moderate income, and to serve the need of current CLT homeowners in perpetuity. Since its inception in 2006, 35 families have been able to purchase 33 affordable housing, including 2 resales, valued at over \$12.7 million at prices significantly under market. Na Hale O Maui received grants of more than \$6.5 million from Federal, State and local government, to purchase abandoned and foreclosed land and homes, and assist with construction of new homes. The properties are sold leasehold to income qualified buyers at below market prices. Na Hale O Maui continues to invest sales proceeds to develop more properties for income qualified families in Maui County.

Homeowners may receive from 25% to 50% of the appreciation, at resale. This means that the initial subsidy and shared appreciation remain invested in the property keeping the homes affordable generation after generation and buyer after buyer.

2016 income guidelines are set by the Federal Housing and Urban Development (HUD) for Maui. Na Hale O Maui may sell to families with income not exceeding 120% of Area Median Income adjusted for household size. For example, a family of four could earn up to \$97,800 to qualify for a home. The homeowners must prequalify for a loan and are generally required to provide 5% of the overall home price up front (currently 3% down plus 2% closing cost).

Na Hale O Maui created a matching down payment assistance grant, and has provided grants of more than \$105,000 to Maui families. Our grant will provide additional matching funds to assist prospective homeowners in coming up with the down payment and closing costs to buy their affordable home.

Na Hale O Maui's budget is almost \$1.5 million.

For more information about donating to the KLC Endowment Fund, please contact Tom Rietz, KLC Endowment Committee Chair, at 808-214-5223.





**UP** is the new name of our ministry for young people ages 18-21! **UP** stands for “Unlimited Potential with God.” This month Thanksgiving care packages were sent to all these young people to tell them how thankful we are for them (packages were also sent to our young adults ages 22-25). Everyone was so happy to get a wonderful reminder of home. A special mahalo to Nancy Kistler and Cheri Beyersdorf for their help assembling the packages, and to Sanni for her generous donation! Now, as promised, here is what our wonderful young people are up to.....Bubba



**Nels Romerdahl**

I am a Junior at UHMC, studying Applied Business & Information Technology. I will obtain certificate in Cybersecurity in May 2017.



**Allison Rudow**

Aloha KLC! I am missing you guys while I am up here at NAU in Flagstaff, Arizona. I am freezing up here while working on a major in Secondary Education and Spanish. I am playing beach volleyball on the NAU Club Team, and I also play on an indoor team. When I’m not in class or on a court, I am working at a Hawaiian BBQ restaurant! Love you guys!



**Emily Pluchos**

I am attending the University of Puget Sound. I am currently undecided on my major but I am considering psychology. I am working for the registrar office, and I am also part of the Repertory Dance Group, which is really fun. I have also been attending a couple different bible study groups which helps me stay connected with God! I miss everyone at KLC and cannot wait to return in the winter.



**Emily Ratay**

I am a pre-med student at Penn State. In this picture, I am cheering on the football team with my roommate and 107,000 other fans! I have been loving college so far! I have been doing a lot of fun things this semester, like camping outside of the stadium for 1st row seats at the football games (I even made it on national TV), or scuba diving around Pennsylvania (I’m the treasurer of the scuba club).

## UP Continued



### **Kayana Kamoku & Emma Pilotin**

We're at Grand Canyon University and we are both majoring in Biology, with an emphasis in pre-med. We're in the Hawai'i club and the anatomy club, and we continue to play volleyball on the intramural team. We've made friends with other kids from Maui and O'ahu, which has been fun. Being away from home has been tough, but we've learned good ways to cope and have made great friends to help school feel a little more homey. Overall, college life has been fun, and a good learning experience thus far, but we're definitely looking forward to coming home!



### **Eryn Pendergast**

I'm a senior at Syracuse University and am majoring in Film. Right now I'm in LA as part of my school's Los Angeles Semester program. I'm interning at FilmNation Entertainment. I will graduate this May!



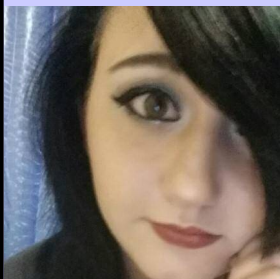
### **Bailey Pendergast**

I'm a senior Criminology & Criminal Justice major and Philosophy minor at the University of Maryland. I am currently doing an internship at the FBI Headquarters in Washington, D.C. For the last year and a half, I have also been working as a Resident Assistant in an on-campus residence hall. I will graduate in May!



### **Kirsten Paulson**

I'm a freshman at Oregon State University and I am currently majoring in Environmental Science. I hope everyone at KLC is doing well, and I send you all lots of love from Oregon!



### **Lanyssa Kennedy**

I am living in St. Peters, Missouri with my aunt & uncle. I am enjoying spending time with my extended family, and I am having fun meeting lots of new people. I am currently attending *Current Trends*, a cosmetology school, and I absolutely love it - I have found my passion!



# KEOLAHOU FOOD PANTRY THANKSGIVING OUTREACH

On Friday November 11, we had the humbling yet heartwarming experience of unloading the 100 Thanksgiving Boxes at the Keolahou Food Pantry.

You, the congregation at KLC made this possible through your unending generosity. The Outreach/Assistance Team gathered \$1800 in donations of which \$750 was used to purchase the boxes from Maui Food Bank. A huge Mahalo to Zel and Winafred for coming to do the unloading along with the Keolahou Volunteers. The Food Pantry is truly grateful for the support they receive from KLC.

With the remaining funds we are working on Christmas Hygiene supplies & Gift Cards to be delivered along with the Kei-ki Toys. Mahalo Nui to everyone who donated to this special outreach ministry.

Margie Terluin





# THANKSGIVING

As always we had our traditional Thanksgiving Lu'au after service on Thanksgiving. Mahalo to everyone who brought food and to the Tongan Congregation for again joining with us to Celebrate.



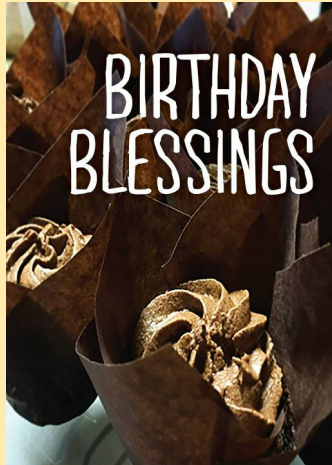
# TREE DECORATING

If you haven't driven by Kihei Lutheran Church and noticed the really big tree on the corner then really won't miss it now. There are over 1000 lights decorating it for the Advent and Christmas season. A huge Mahalo goes out to Maui Lighthouse for coming and donating their boom truck to hang the lights. If you haven't seen it I suggest you drive by at night to take a look.



## HAU'OLI LA HANAU! (Happy Birthday!)

Bob Schumacher	12/1
Rhonda Taylor	12/1
Keli Nelson	12/3
Barbara Rudow	12/4
John Bendon	12/5
Denise Ankrum	12/9
Luke Bendon	12/11
Diana Hill	12/11
Erik Jorgenson	12/11
Molly Lawson	12/12
Lisa Paulson	12/12
Eric Romerdahl	12/12
Sharon Schoenemann	12/13
Marilyn Fornwall	12/14
John Thorngren	12/14
Heather Ballaine	12/15



Melanie Spencer	12/16
Kaha'aheo Elaban	12/18
Gretchen Benson	12/20
Janice Porter	12/21
Hilary Glassel	12/22
Vicki Lee	12/23
Margie Terluin	12/24
Holly Pendergast	12/25
Emily Pluchos	12/25
Dianne Horn	12/26
Bert Schifferling	12/27
Jack Wierzba	12/27
Lottie Ali	12/29
Deidre Tegarden	12/29
Roy Gesch	12/30
Karlin Serrato	12/30
Jerry Embree	12/31

## HAU'OLI LA HO'OMANA'O! (Happy Anniversary!)

Doug & Lisa Paulson	December 2, 1995
Jeff & Charlotte Wright	December 2, 1972
David & Kathy Krueger	December 18, 1971
Tony & Carol Wakefield	December 19, 1964
Todd & Molly Lawson	December, 21 1991
Duke & Sharon McElroy	December 23, 1963
Neil & Sheila Turnbull	December 25, 1985
Bob & Jane Schumacher	December 29, 1991
David & Rhonda Stoltzfus	December 30, 1995
Paul Cheng & Jill Jennings	December 31, 1989





# Worship Volunteers

## December 2016

### ASSISTING MINISTERS

4	9:00	Richard Gesch
11	9:00	Joel Rudow
18	9:00	Mike Beyersdorf
25	9:00	Zel Terluin

### READERS

4	9:00	Nancy Meyer
11	9:00	Linda Hangartner
18	9:00	Nancy Jordan
25	9:00	Lynn Carlson

### COMMUNION

4	9:00	Marilyn Hopkins & The Stoltzfus Ohana		
11	9:00	Joy Nelson, Don & Vicki Lee, Andrea Harris, Linda Hangartner & Jack Wierzba		
18	9:00	Keli Nelson, Phil Proctor, Mike Beyersdorf, Zel Terluin, Hilary Glassel & Betty Misner		
24	5:00	4-Given Gentlemen	7:30	Hula Ladies
25	9:00	Marilyn Hopkins		

### GREETERS

4	9:00	Carolyn Rixey-Wagner, Barbara Rudow, Sue Moorcroft & Holly Pendergast		
11	9:00	Stephanie Cuomo, Joy Nelson, Linda Archer & Hilary Glassel		
18	9:00	Pilotin's, Nels Glesne & Karen Barber		
25	9:00	Jerry & Berta Sieck & Stoltzfus		

### USHERS

4	9:00	John Thorngren & Duane Chaney		
11	9:00	Lynn Carlson & Duane Chaney		
18	9:00	Keek & Mo Hottendorf		
25	9:00	Lynn Carlson & Duane Chaney		

### MEDIA

4	9:00	Nels Romerdahl		
11	9:00	Joel Rudow		
18	9:00	Nels Romerdahl		
24	5:00	Mike Beyersdorf	7:30	Owen Pendergast
25	9:00	Stephanie Mohr		

### KEIKI TIME

4	9:00			
11	9:00			
18	9:00			
25	9:00			

### FLOWERS

4	The Wrights—Advent Wreath			
11	The Wrights—Advent Wreath			
18	The Wrights—Advent Wreath			
25	The Wrights—Christmas Wreath			

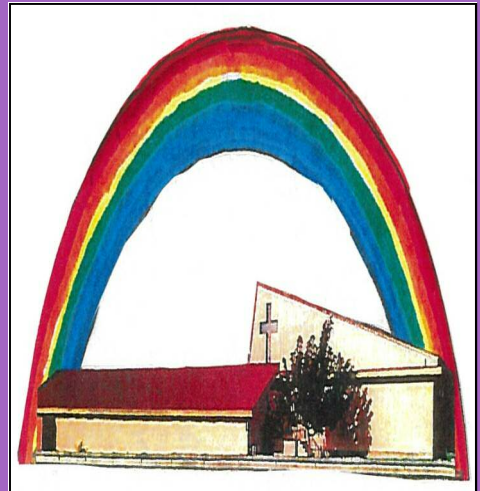
### REFRESHMENTS

4	Thorngren's			
11	Hottendorf's			
18	Mikhaela Galindo			
25	Cheryl Rietz			



## Important Statistics

October	2015	2016
Average Sunday Worship Attendance -	151	131
Offerings For The Month (members & visitors)	\$26,630.85	\$25,585.46
Offerings – Year to Date (members & visitors)	\$264,626.75	\$262,603.69



### Prayer Shawl Ministry

The holidays are upon us. Do you know someone you think would like to have a prayer shawl? Maybe someone who finds the holidays less than a happy time. Or a friend who has had some difficult times. Pick one up any Sunday or ask Cate during office hours. We continue to pray for church family and friends each week. Please also keep the Prayer Shawl Hui in your prayers.

God bless,

The Prayer Shawl Hui



Next Meeting will be  
December 20th, at 7:00  
p.m.

### Men's Hui



**MEN'S GROUP**

December 27<sup>th</sup> at  
6:00 p.m. at the  
Church.

*All are Welcome*

## Women's Hui – All are Welcome!

**WHEN:** Tuesday, December 27<sup>th</sup> from 6:00 pm to 8:00 pm.

**WHERE:** Youth Room (old Kitchen).

**BRING:** Your favorite drink, a pupu to share and a Bible.

**QUESTIONS:** call Betty Misner (280-1648) or Karen Carlson (446-1180)

We will be share the pupu's and then watch a short video by Sheila Walsh titled "The Storm Inside". We all face storms inside of us. Heartbreak, fear, regret. Insecurity or shame. During this study, we look at eight women of the Bible and see the crucial choices each one made and how God guided them through their storms.

### Administrative Office Hours:

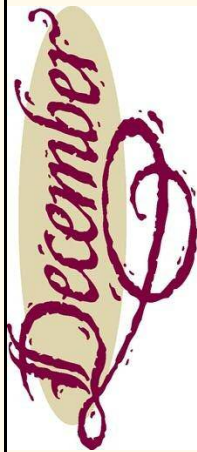
Monday thru Friday:  
9:00 AM—5:00 PM



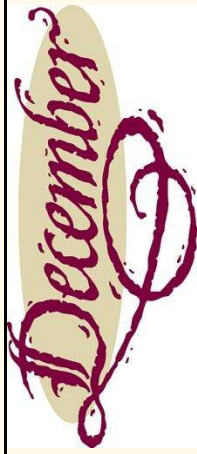
#### "LIKE" US ON FACEBOOK

If you haven't already "liked" our page:  
<http://www.facebook.com/KiheiLutheran>,  
go ahead and do so to be the most up-to-date on  
upcoming church events. A link is already on the church  
website!





# Kihei Lutheran Church December 2016



SUNDAY	MONDAY	TUESDAY	WEDNESDAY	THURSDAY	FRIDAY	SATURDAY
<b>27</b> 9am Worship 10:15 Choir 10:15am Jr/Sr. High Sunday School 10:15am Adult Discussion 5pm Tongan United Methodist	<b>28</b> 10am Monday Meditation's 5pm Monday's at Manoli's 8pm Tongan UMC Choir	<b>29</b> 12pm Al-Anon 5pm Chimes 6pm Women's Hui	<b>30</b> 8:30 am CHEM School 5pm Tongan UMC 6:30pm Wednesday Study Hui 8pm Tongan UMC Choir	<b>1</b> 7am Weightwatchers 7:30am Prayer Hui 9am Prayer Shawl Hui 10am Humana 5:30pm Hula 5:30pm 4-Given 6:45pm Masterworks	<b>2</b> 12pm Al-Anon Meeting	<b>3</b> 7pm Tongan UMC Choir
<b>4—Keolahou Food Pantry</b> 9am Worship 10:15am Choir 10:15am Jr/Sr. High Sunday School 10:15am Adult Discussion 5pm Tongan United Methodist	<b>5</b> 10am Monday Meditation's 5pm Monday's at Manoli's 6:15pm Mutual Ministry 8pm Tongan UMC Choir	<b>6</b> 12pm Al-Anon 5pm Chimes	<b>7</b> 8:30am CHEM School 2pm Finance Team 5pm Tongan UMC 6:30pm Wednesday Study Hui 8pm Tongan UMC Choir	<b>8</b> 7am Weightwatchers 7:30am Prayer Hui 9am Prayer Shawl Hui 5:30pm Hula 5:30pm 4-Given 6:45pm Masterworks	<b>9</b> 12pm Al-Anon Meeting	<b>10</b> 7pm Tongan UMC Choir
<b>11—Cantata</b> 9am Worship 10:15am Congregational Meeting 5pm Tongan United Methodist	<b>12</b> 10am Monday Meditation's 5pm Monday's at Manoli's 6:30pm Worship Team 6:30pm CERT 8pm Tongan UMC Choir	<b>13</b> 12pm Al-Anon 5pm Chimes 5pm Community Assistance	<b>14</b> 8:30am CHEM School 5pm Tongan UMC 6:30pm Wednesday Study Hui 8pm Tongan UMC Choir	<b>15</b> 7am Weightwatchers 7:30am Prayer Hui 9am Prayer Shawl Hui 5:30pm Hula 5:30pm 4-Given	<b>16</b> 12pm Al-Anon Meeting	<b>17</b> 7pm Tongan UMC Choir
<b>18—Backpack Buddies</b> 9am Worship 10:15 Choir 10:15am Jr/Sr. High Sunday School 10:15am Adult Discussion 12pm Nelson Bridal Shower 5pm Tongan United Methodist	<b>19</b> 10am Monday Meditation's 5pm Monday's at Manoli's 8pm Tongan UMC Choir	<b>20</b> 12pm Al-Anon 5pm Chimes 6pm Administrative Team 7pm Church Council	<b>21</b> 5pm Tongan UMC 6:30pm Wednesday Study Hui 8pm Tongan UMC Choir	<b>22</b> 7am Weightwatchers 7:30am Prayer Hui 9am Prayer Shawl Hui 5:30pm Hula 5:30pm 4-Given	<b>23</b> 12pm Al-Anon Meeting	<b>24—Christmas Eve</b> 5pm Worship 7:30pm Worship
<b>25—Christmas Day Newsletter Deadline</b> 9am Worship 5pm Tongan United Methodist	<b>26—Office Closed</b> 5pm Monday's at Manoli's 8pm Tongan UMC Choir	<b>27</b> 12pm Al-Anon 5pm Chimes 6pm Women's Hui 6pm Men's Hui	<b>28</b> Nelson Wedding Prep 5pm Tongan UMC 6:30pm Wednesday Study Hui 8pm Tongan UMC Choir	<b>29</b> Nelson Wedding Prep 7am Weightwatchers 7:30am Prayer Hui 9am Prayer Shawl Hui 10am Humana 5:30pm Hula 5:30pm 4-Given	<b>30</b> 12pm Al-Anon Meeting 5pm Nunani/Nelson Wedding	<b>31—New Year's Eve</b> 7pm Tongan UMC Choir

**Staff**

Pastor David Barber  
 Music Coordinator Beth Wills  
 Church Administrative Asst. Cate Evert  
 Bookkeeper Sue Whitney  
 Nursery Attendant Lucinda Chartrand

**Worship Area Coordinators**

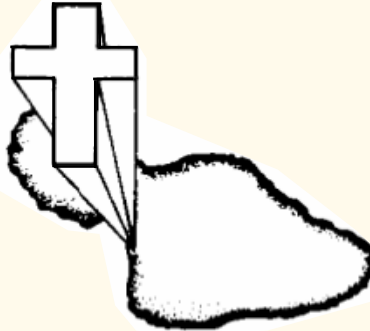
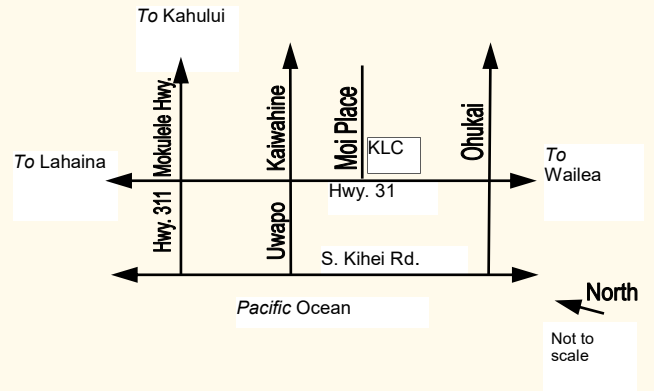
Assisting Ministers Zel Terluin  
 Chimes & Choir Director Beth Wills  
 Communion Assistants Betty Misner  
 Flowers Charlotte Wright  
 Readers Nancy Meyer  
 Refreshments Vicki Nelson  
 Ushers Duane Chaney  
 Bread Coordinator Sanni Tharp

**Other Contacts**

Treasurer Vicki Lee  
 Financial Secretary Tom Rekow  
 Hula Group Sally Handley  
 E-mail Prayer Chain Cate Evert

**SUNDAY WORSHIP**

**9:00 AM**



Kihei Lutheran Church  
 220 Moi Place, Kihei, HI 96753  
 Phone: 808/879-7979  
**E-mail Address:**  
[klc@kiheilutheran.org](mailto:klc@kiheilutheran.org)  
**Website Address:**  
[www.kiheilutheran.org](http://www.kiheilutheran.org)  
**Parsonage:**  
 2218 Auina Place, Kihei, HI 96753  
 Pastor David: 868-3147 Cell:970-988-8274

*“Where all know they are beloved children of God”*

Address Correction Requested

Non-Profit Org.  
 U. S. Postage  
 Paid  
 Permit 47  
 Kihei, HI

**Kihei Lutheran Church**  
 220 Moi Place  
 Kihei, Maui, Hawaii 96753  
 (808) 879-7979