



KLC Ohana News



FEBRUARY 2014

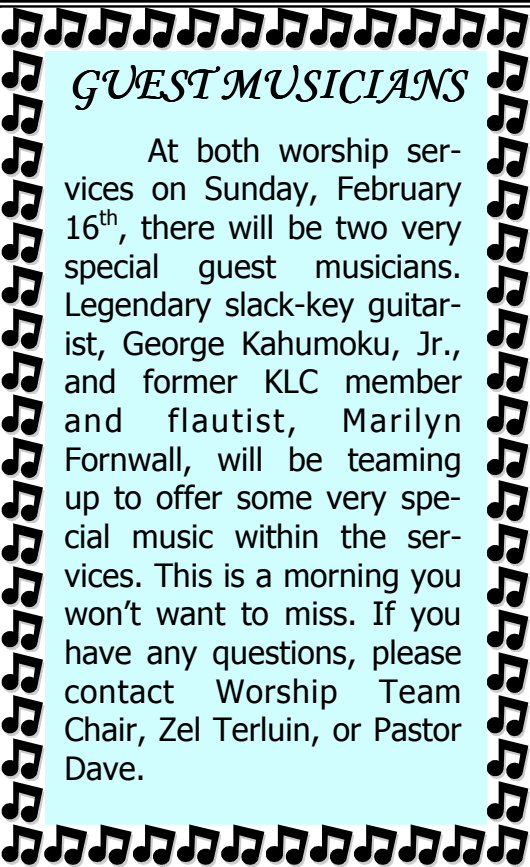
KIHEI LUTHERAN CHURCH

PASTOR DAVID J. KRUEGER

SILENT AUCTION ITEMS NEEDED!

We are in real need of auction items for February 15th's Youth Dinner Fundraiser!

Do you have a new or nearly new item to donate to our silent auction? Perhaps you have a vacation rental, a boat trip, or a gift card to a local restaurant that you can donate? Drop off anytime during weekday office hours (Monday through Friday 9am-Noon, or Monday through Wednesday from 1-3pm_or on Sunday morning. Don't forget to sign your item in so we know who donated it! If you have any questions, please call Dawn Fleishman at 808.250.3557. We also have a few spots left if you would like to attend the dinner. Tickets are \$40/person. All proceeds go to help the high schoolers go to California this June for Western States ELCA youth conference.



GUEST MUSICIANS

At both worship services on Sunday, February 16th, there will be two very special guest musicians. Legendary slack-key guitarist, George Kahumoku, Jr., and former KLC member and flautist, Marilyn Fornwall, will be teaming up to offer some very special music within the services. This is a morning you won't want to miss. If you have any questions, please contact Worship Team Chair, Zel Terluin, or Pastor Dave.

MEMBERSHIP CLASS

On Sunday, February 9th, 2:00-6:00 p.m., Pastor Dave will lead an adult membership class for those interested in the possibility of becoming members of Kihei Lutheran Church. The class will meet at the church, and will be a dialogue-style overview of the Christian faith from a Lutheran standpoint. There will then be a special lunch on the following Sunday, February 16th, starting at 11:30 a.m., for those who wish to join the congregation, where they will be able to meet their sponsors. Reception of new members will take place during the worship service on Sunday, February 23rd. If you would be interested in attending this class, please speak with Pastor Dave (879-7979).





Dave Krueger



ALOHA FROM PASTOR DAVE

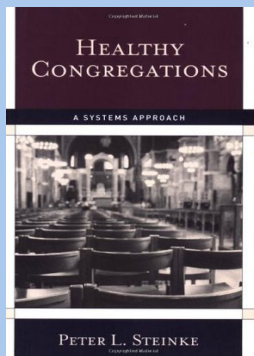
On January 25-26, KLC hosted a Healthy Congregations Workshop, led by Pastor Paul Kirchner, from Lihue Lutheran Church, Kaua'i. It was an extremely useful and helpful two days as we wrestled with how we work together, with all of our differences, in a healthy way. On Saturday morning there were 35 people in attendance. 33 people participated Sunday afternoon.

As part of his presentation on Sunday afternoon, Pastor Paul shared what he considered to be seven things a congregation can do to maintain health amongst its members. I share those seven points so that we all might be aware of what they are.

Seven Health Promoters:

1. Maintain focus on your sense of purpose. This refers to the mission of Christ that calls KLC into its future. The question that needs to be asked is: Are we actually focusing on what Jesus would have us do, or on our own agenda?
2. Maintain clarity about what is and what isn't beneficial to the well-being of the congregation. When all is said and done, it's important to recognize that we're all on the same page in our desire to do what is best for KLC, even though we may differ on what that is.
3. It's important to sense the mood and tone of the congregation. If we truly trust that God is in charge and will have the last say at KLC, then there will be a playful and hopeful tone to our interactions.
4. Encourage the free flow of information. This minimizes decision making by a small group of people and avoids "parking lot meetings", while it encourages the involvement of all.
5. Avoid the temptation to moralize in simple right/wrong and good/bad categories. Instead, it's important to see each other as whole persons with strengths and weaknesses. This enables us to make judgments without being judgmental.
6. Avoid using phrases that begin with the word "you", which shifts the focus to the other person and often leads to blaming. Instead, use phrases that begin with the word "I", which leads to self-defining.
7. Keep the spark of Holy Imagination alive. We are called to re-image ourselves, each other, and KLC as Christ sees us. In that image we begin to have a holy future together.

It was a very helpful weekend for those who attended the workshop. The feeling is that an additional meeting or two on this matter would be important for us to have. Please watch carefully for information about the next meeting, which should be forthcoming soon. May God surround us with his grace and love as we work together to serve our Lord through the life and ministry of KLC!



Ke Akua me ke Aloha,

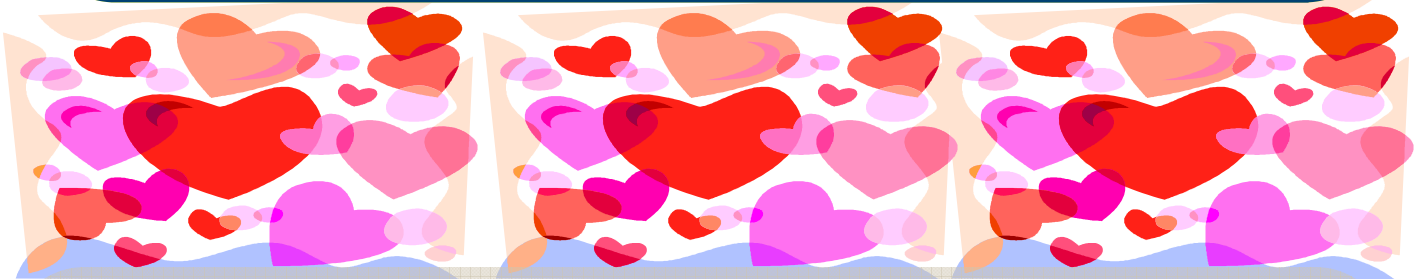




DONATE YOUR SEAT



With the expansion of the KLC facilities, the seating capacity of the worship area will be greatly increased. That means there will be a need for 75 additional pew chairs, at the cost of \$100/chair. Would you be willing to purchase one of those seats for the expanded worship space? If so, please make out a check to Kihei Lutheran Church in the amount of \$100, and mark "Pew Chairs" in the memo line. Then place that check in the offering bowl on Sunday, or mail it to the church at 220 Moi Place Kihei, HI 96753. Mahalo nui for your kokua (help) with this important part of the facilities expansion.



ANNUAL CONGREGATIONAL MEETING

Sunday, February 16th, has been chosen for the KLC Annual Congregational Meeting, which will take place in-between services, around 9:15 a.m. On that day the different ministry teams of KLC will present their reports, along with the elections of voting members to the 2014 Pacifica Synod Assembly, and the 2014 Nominating Team. Please mark that date on your calendar and plan to attend this important meeting. You will be able to pick up your copy of the KLC Annual Report at church starting Sunday, February 2nd.

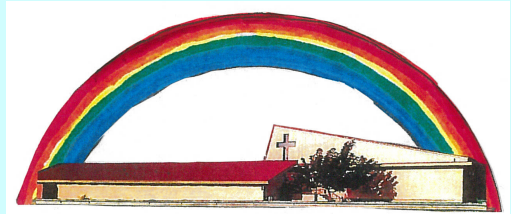
FIRST CALL FOR NOMINEES

At the Annual congregational meeting on February 16th, the 2014 Nominating Team will be elected. It will then be their responsibility to gather together a list of nominees for the church council elections which will take place in April. The council term will begin July 1st, and is a two-year term. Please start to consider now whether you might be willing to serve in this area of the ministry of KLC. The council consists of 12 members, 6 of which are elected each year. If you would like more information, please speak with either the council president, Zel Terluin, or Pastor Dave.





 Aloha from The Prayer Shawl Hui
 The next blessing of the Prayer Shawls will be Sunday February 9th at both services. This month we celebrate 7 years of this ministry at KLC. We want to say Mahalo to everyone for your prayers and financial support these past seven years. Also a HUGE Mahalo to all our woman who knit and pray and make such beautiful shawls. Ladies you are the Hands of Jesus, reaching out and touching lives!!! We average 25 Prayers Shawls every month that go out and bless so many with love, comfort, and prayer. Please know you are welcome to a Prayer Shawl for any occasion. We meet every Thursday at the church from 9-11AM. God bless you!!
In His Love, The Prayer Shawl Hui



Women's Hui Bible Study

Please come and join us for the next Woman's Hui Bible Study

When: *Tuesday, February 25th from 6-8PM*

Where: *2218 Auina Place – Kihei*

Call: *875-7753*

Bring: *Your OWN DRINK AND A PUPU to share.*

This months study:
*THE PROMISE OF HOPE
 "I know there's something better"*

This has been an outstanding DVD series featuring Sheila Walsh – each lesson stands on it own.

We would love you to join us!!!

Reminder:
2014 CONTRIBUTION ENVELOPES
 Many of our Members and Associate Members have already picked up their 2014 contribution envelopes. If you have not picked yours up yet, please do so when you go to your next worship service. If you live out of town and would like us to mail the envelopes to you, please email Val Eurtan, KLC Office Manager, at KLC@KiheiLutheran.org. If you normally contribute through Vanco or other bill payment system and don't need envelopes, please also email Val. This will reduce the cost of producing the envelopes next year.
Submitted by Tom Rietz, Financial Secretary

Try It—You Might Like It!

KLC is blessed to have many, many talented people. It's been a while since everyone has completed a Time and Talent sheet, and we'd like to find out what you're interested in.

The Time and Talent sheets are for everyone of all ages, and for members, associate members, and visitors who come for a few weeks and would like to be involved. You'll find a Time and Talent sheet in each bulletin on February 16 and March 2.

On one of those dates, please take a few minutes to complete the form before you leave services (but, of course, not during Pastor's sermonJ)! You might want to continue with the activities you've been involved in, or you might want to try something new! Best of all, if you find that an activity isn't a good match, you don't have to keep doing it.

The sheets have all sorts of fun things to do, from short-term to longer-term activities. So, please take a little time and let us know your talents and interests, whether it's one activity or a dozen. All are appreciated!

Spiritual Gifts Team





Important Statistics

JANUARY	2012	2014
Average Sunday Worship Attendance	207	237
Offerings For the Month (Members & Visitors)	\$ 34,418	\$ 29,356.
Offerings—Year to Date (Members & Visitors)	\$286,000	\$ 300,164

STEWARDSHIP OF OUR TIME AND TALENT

As Lutherans we know that "by Grace we are saved through Faith"...FAITH ALONE,+ Nothing! God's FREE GIFT does not come through "works lest any man should boast" - BUT—James, a Brother of Christ, in his Epistle (James 11:14-17) writes, "what good is it my brothers, if a man claims to have faith but has not deeds? In the same way, faith by itself, if not accompanied by deeds, is dead." At KLC many take great pleasure in serving the Lord in different ways, not because one must but in gratitude for that FREE GIFT.

At the worship services on Feb. 23rd and March 2nd the Committee will be distributing TIME AND TALENT SURVEYS and asking that you complete and return them before leaving. This survey will be different than previous ones in that you are asked to identify your special talent(s) and/or skills while indicating where you would take joy in giving of yourself to serving God.

We are all Beloved Children of God and He has blessed each of us with one or more "Spiritual Gifts". Take the time before February 28th to search them out in the Bible texts Romans 12:6-8, Corinthians 12:4-11 & 28. Therein are identified the key ones...Serving, Teaching, Encouraging, Giving, Leadership and Discernment. May your heart and hands be opened to several opportunities as God has Blessed YOU, to then be a Blessing to others.



Reminder...



Kiheilutheran.org

In the coming months you will want to regularly visit our website at www.kiheilutheran.org. Coming very soon, we will have a new format, design and lots of new and timely information. We will continue to update the website with recent photos and upcoming events. As we are working on getting the new website online and up to date, please feel free to email us any feedback you have on the new design.

In addition to the new website, our desire is to begin sending out E-News through email so that you do not need to wait for a monthly newsletter to know what is going on in the life of the church.

The E-News will have information on upcoming events, worship volunteers, birthdays, anniversaries and a link to our online calendar. We will have several hard copies printed and available at Sunday services for those who prefer to get their "news" in this format. Watch for this exciting E-News email beginning sometime this Spring.



"LIKE" US ON FACEBOOK

If you haven't already "liked" our page: <http://www.facebook.com/Kiheilutheran>, go ahead and do so to be the most up-to-date on upcoming church events. A link is already on the church website!

Administrative Office Hours:

Monday thru Wednesday
 9:00 AM- 12:00 PM
 1:00 PM - 3:00 PM
 Thursday and Friday
 9:00 AM- 12:00 PM





Keiki

VBS Prep: Saturday, February 22, 10:30am—2pm

In preparation of our SonWest Roundup VBS program this summer, we will have a construction and painting day for our "Town Square." Lunch & beverages will be provided. Let Margie know if you can attend or call Dawn at 808.250.3557.

Keiki Time Volunteers Needed

Do you love kids? Do you want to know the kids at KLC better? Do you have 30 minutes of your time to give twice a year? , Sign up to be a Keiki Time volunteer. We will be holding training sessions in February for both new and returning volunteers. Contact Dawn for more information or to volunteer at 808.250.3557

During Worship Services

worship bags are located on the back table to assist kids in worshipping God during the service. Inside, your child will find a Keiki Worship Guide, the words to the Lord's Prayer, some crayons, books, pipe cleaners, and other items.

name tags for kids are available at the back table next to the Worship Bags. Please take a moment each Sunday to put a name tag on your child so that our wonderful ohana can learn each child by name!

the keiki message Right before the scripture readings, children under 12 (or older if desired!) are invited to come forward for a children's message.

keiki time immediately follows the Keiki Message. Children age 8 and under are invited to the education room where they have circle time and a short Bible story/lesson. Children return to parents in time to participate in Communion.

Sunday School 9:15 - 10:15am

K-6th grades: meet in Education Room, teacher for February: Kristi Bendon

7th-12th grades: meet Pastor Dave's Office, teacher: Barbara Rudow

Adults: meet in the Secretary's Office, facilitator: Jan Porter





Youth Happenings

Go Deep

Saturday, March 1st, 5-9pm Because we know the teenage years aren't just about pizza parties and sunshine, we want to give teens a space to come together and reflect on the more difficult things in life. This first meeting will be an un intimidating time of deeper conversation & also a get-to-know you time so that we can build a group who cares for each other in both the good & the tough times. Dinner will be provided. Please contact Dawn at 808.250.3557 for more information on format & content.

Lock-In

Friday, February 21st

7pm Friday through 2:30pm Saturday

For youth, 8th grade & up, we will have a lock-in at the Fleishman's home in Wailuku. Bring \$10 for a midnight McDonald's run, sleeping bag, a snack to share, games, & lots of energy! In the morning we will take a hike in Iao Valley and then head over to the church to paint and construct the town square for this summer's VBS. Parents, pick up your youth from the church at 2:30pm. RSVP to Dawn at dawn@kiheilutheran.org or 808.250.3557.

Western States

June 25th-July 1st, we will spend the week at California Lutheran University for ELCA's Western States Youth Gathering. We will join hundreds of other ELCA youth for worship gatherings, small group experiences, an immersion experience in Los Angeles, and day at Magic Mountain.





Youth Happenings

Valentines' Dinner & Silent Auction

Saturday, February 15th, 4:00pm

Come ready to serve! Youth (8th –12th grades) will set up, serve, and clean up at the Valentine themed silent auction and dinner youth fundraiser. This will be a really fun event! Anyone who is planning to attend Western States this summer should plan to be there

Also, please collect your items to be auctioned off at the dinner. If you need a letter to give local businesses, please let Dawn know. **Silent Auction items are due this Sunday, February 9th.**

One on Ones!

.I am always looking to connect with youth one on one. If you have time to get together at Starbuck's or Jamba Juice after school let me know. I also love meeting and getting to know your friends. So, bring them along and let's hang out! Call or text me at 808.250.3557 —Dawn Fleishman

Juniors & Seniors in High School

The young adults are taking a short-term mission trip to Fiji this July. HS juniors and seniors are invited to participate in this mission trip as well. If you would like more information on the trip, contact Dawn at dawn@kiheilutheran.org.





Under 40ish

Young Adult Coffee

Young adults, ages 18-25, meet at Peggy Sue's Coffee House in Kihei at 3pm on Sunday, February 16th for coffee & conversation..

July Mission Trip to Fiji

Short Term Mission Team Now Forming!
We will travel to Suva, Fiji where we will serve at Homes of Hope, a residential campus for single mothers who are the most vulnerable to forced sex, sexual exploitation, trafficking, abuse, and violence. We will partner with them in their passion to create a culture of freedom for women and children and to stop the cycles of forced sex. This will be a 8-10 day trip at the end of July.

Weekday Women's Group

Single, Married, Kids, No-Kids... Maybe you're a stay at home mom, work part-time, or are a working woman without the Monday-Friday daytime workday schedule. This group is just for you if you have two hours each week (or every other week) on a weekday morning to get together with other women for conversation & coffee.

Dinners & Discussion

We take turns bringing dinner & hosting at our houses. In addition to food and fellowship, we use the Wired Word curriculum where we discuss current events through the lens of our faith.
We currently meet once a month on a weeknight from 5-7pm.

For information on these or other under 40ish happenings, please contact Dawn Fleishman at dawn@kiheilutheran.org or 808.250.3557.





Family Christmas Eve Service





Souper Bowl of Caring: **SEAHAWKS WIN!**

*Before the NFL Super Bowl on Sunday, February 2nd, we asked KLC to participate in the Souper Bowl of Caring. It's a day when congregations across the nation gather canned food items and cash donations to help the hungry and hurting. Here's how it works. We asked you each to bring one canned food item to church. After worship, our youth were on the lanai with two large soup kettles, one marked for the Denver Broncos, and the other for the Seattle Seahawks. We asked each person to place \$1 into one of the kettles as they leave worship, depending on which team each person supported. The congregation called it! The tally is in. **Broncos: \$168.01 and SeaHawks: \$324.53!***

The canned food & donations were given to the Keolahou Food Pantry.

Kerygma: the Bible in Depth.

We have started the new adult Bible study, an intense course that we originally thought to be able to complete in 12 weeks has grown to "whatever." The class has found that the material is too interesting and too important to gloss over in so few weeks. As the facilitator, I have found that I am really reading my Bible and finding hidden treasures that are so often overlooked. In Exodus 18 you will find a surprising character who told Moses to cease and desist his daily judicial duties while wandering the desert. Do you see the similarities of our own judicial system? Please join us in the admin assistant's office at 9:15am for more treasures to be uncovered.

Whale Watching Adventure

1:15pm Sunday, February 23rd

Come on a whale watching boat adventure with 140 of your closest friends from KLC. The Pacific Whale Foundation's team of Marine Naturalists will lead this exciting adventure and will explain and interpret the social behavior of humpback whales. \$25 per adult and \$10 per child. Reserve your seat now by contacting Dawn Fleishman at 808.250.3557 or dawn@kiheilutheran.org. Hurry! We only have 20 seats remaining!

Valentines' Silent Auction & Youth Dinner

5:30pm Saturday, February 15th

Support our youth and help them raise money to attend the ELCA Western States Youth Gathering in California this summer. Join us for this fun night of Valentine's dinner and silent auction. We are almost at capacity so reserve your seat now by contacting Dawn Fleishman at 808.250.3557 or dawn@kiheilutheran.org. We are also in great need for items of value for our silent auction component. If you would like to donate a gift card to a local restaurant, business, or activity or have a new (or like-new) item to donate please bring them by the church this week or weekend.



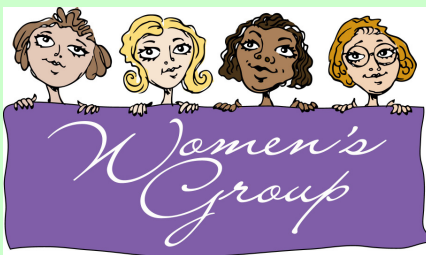
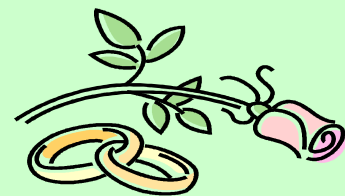
HAU'OLI LA HANAU! (Happy Birthday)



Lindzi Axe-Takasaki	2/1	Billie Moksnes	2/15
Jeff Wright	2/3	Kayana Kamoku	2/16
Stephanie Mohr	2/5	Cathy Trott	2/18
Simon Stolfus	2/7	Jennifer Piellucci	2/19
Jan McDonald	2/8	Connie Pluchos	2/19
Betty Misner	2/10	Mike Kirby	2/20
Dave Reader	2/10	Tia Schultz	2/24
Kathleen Reiser	2/10	Judy Butz	2/25
Jeanie Vance	2/11	Richard Gesch	2/25
Brad Hill	2/12	Jeff Baker	2/27
Carol Wakefield	2/14		

HAU'OLI LA HO'OMANA'O! (Happy Anniversary)

Dave and Sally Handley	2/14
Ed Schafer & Linda Findlay	2/23
Jack and Nancy Jordan	2/28



Women's Hui
 Tuesday, February 25th
 @ 6pm
 2218 Auina Place – Kihei
 Call: 875-7753
All are Welcome!!



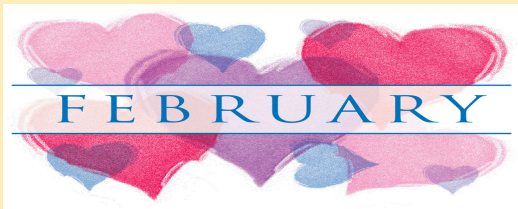
REHEARSALS
Thursday - Hula at 5:30 PM
 Leader: Sally Handley
Sunday - Choir at 10:15 AM
 Leader: Kathy Krueger
Monday - 5:30 PM - Chimes
 Leader: Beth Wills



Tuesday, February 18th
 at 7:00 p.m.



Men's Hui
 Tuesday, February 25th
 @ 6pm
 at the church
All are Welcome!!



Worship Assistants

ASSISTING MINISTERS

2	8:00	Zel Terluin	10:30	Mike Beyersdorf
9	8:00	Dawn Misner	10:30	Dave Ballaine
16	8:00	Richard Gesch	10:30	Andrea Harris
23	8:00	Roxi Nelson	10:30	Judy Houchens

READERS

2	8:00	Susan Johnson	10:30	Hilary Glassel
9	8:00	Dave Mahlke	10:30	Andrea Harris
16	8:00	Jay Nelson	10:30	Don Lee
23	8:00	Nancy Jorden	10:30	Dave Mahlke

COMMUNION

2	8:00	Bev & Bert Schifferline, Nels & Renee Romerdahl, Adam Krueger, Nancy Kentz.	10:30	Holly Pendergast, Dori T., Hilary Glassel, Betty & Dawn, Joy Nelson
9	8:00	Donna Smith, Zel Terluin, Don & Sharon, Sue and Jim O.	10:30	Judy & Doug H., David, Rhonda, Emma, Morgan & Simon Stoltzfus
16	8:00	Hula Group	10:30	Billie & Steve Moksness Vicki & Don Lee, Heather & Dave B.
23	8:00	Mabel & Darryl Pierson, Brad & Diana Hill Evelyn Kaya,	10:30	Hula Group

GREETERS

2	8:00	Burt Schifferling, Carolyn Rixy-Wagner	10:30	Holly Pendergast, Dave & Peggy Crossen
9	8:00	Donna Smith, Carolyn Rixy-Wagner	10:30	Holly Pendergast, Dave & Peggy Crossen
16	8:00	Linda Archer Diana Hill	10:30	Heather & Dave Ballaine
23	8:00	The Stoltzfus Family	10:30	Billie & Steve Moksnes

USHERS

2	8:00	Sue Moorcroft Duane Chaney	10:30	Owen Pendergast, Steve Moksnes
9	8:00	Darryl Pierson Lynn Carlson	10:30	Hilary Glassel David Stoltzfus
16	8:00	Duane & Brent Chaney	10:30	David & Simon Stoltzfus
23	8:00	David & Simon Stoltzfus	10:30	Steve Moksnes Duane Chaney

MEDIA

2	8:00	Sharyl Boren	10:30	Joel Rudow
9	8:00	Owen Pendergast	10:30	Allie Rudow
16	8:00	Stephanie Mohr	10:30	Nels Romerdahl
23	8:00	Joel Rudow	10:30	Sharyl Boren

KEIKI TIME

2	8:00	No KT	10:30	Heather Ballaine
9	8:00	No KT	10:30	Joleen, Emma & Erica Pilotin
16	8:00	No KT	10:30	Kristi Bendon
23	8:00	No KT	10:30	Connie & Emily Pluchos

FLOWERS

2				
9				
16				
23		Bev & Burt Schifferling		

REFRESHMENTS

2		Fred & Cathy Trott		
9				
16				
23				

